

# Light Amplification

## LIGHT AMPLIFICATION

Light amplification occurs when the sun reflects off of certain surfaces, and is directed into one spot on the SeaDek, which damages it. When this happens in certain applications, under certain conditions the SeaDek can be exposed to temperatures above the operational temperature of 165°F (73°C).

Lighter colors reduce the light amplification problem. However, it will not be covered under our standard warranty if light amplification occurs. Other material problems will still be covered.

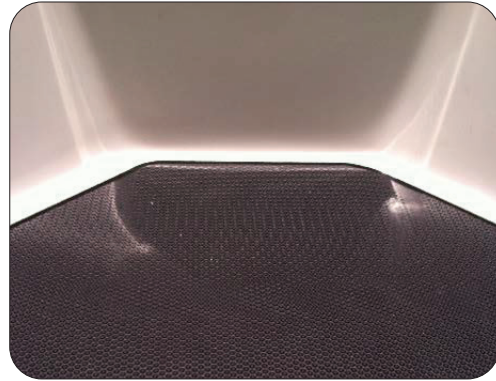
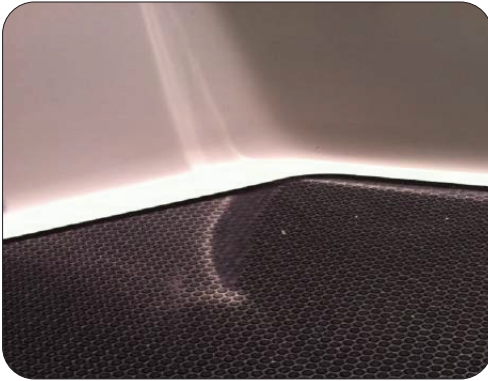
After installation, the preferred method of storage is that the boat (or any other surface of application) be covered. SeaDek pads are very durable, but they will last longer and the colors will fade more slowly if they are not exposed to the elements when not in use. Examples include keeping the boat; in a garage, covered with a canvas boat cover, in a covered boat slip, etc.

### Situations to Avoid:

Inflatable pool toys or water bottles stored long-term on SeaDek, or placing SeaDek near reflective surfaces or beneath glass as detailed in Section II in the SeaDek warranty.

These objects can refract/reflect light, thereby concentrating the beams to a level which can be destructive to the SeaDek pad.

## LIGHT REFLECTION



## LIGHT AMPLIFICATION BURNS

